

# Take Control of your Production with **WINMIS**



**Success Stories are built  
around WinMIS**

**WinMIS, the easy to use, configurable product for  
Management Information System for Process Plants  
– both Batch and Continuous**

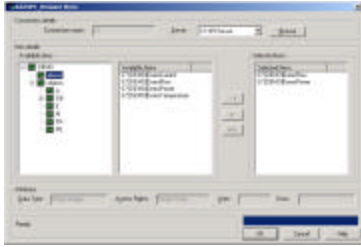
## What is WinMIS

WinMIS is Management Information System software for Process Plants. It is ideally suited for generating Log Sheets, Production Reports, Power Consumption Reports, Performance Reports, Equipment Run Hours and Production Efficiency Reports. It is based on the latest OPC technology which helps to access process data from a wide range of PLC systems of Siemens, ABB, AB, GE, etc. and SCADA packages like Cimplicity, Intellution, WinCC, etc.

## User Gains

1. Saving on Manpower Cost
2. Saving on Time for Preparation of Reports
3. Error Free Since no Manual Intervention
4. Evaluates Plant Performance by accurate monitoring
5. Complex Analysis possible by using Excel Functions
6. Expedites Decision making with accurate information
7. Helps to keep track of Production Targets & Quality
8. Investments are protected as Open and Scalable Architecture
9. Easy to Configure and Maintain

# Fully Featured MIS Software that's easy to Install and Use



State of the art OPC Browser

## OPC Connectivity

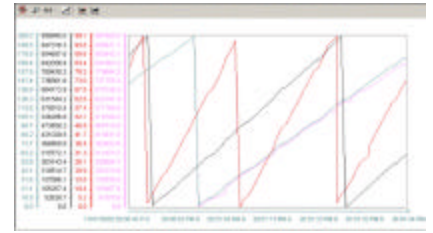
- o Facility to connect to multiple OPC Servers on local or remote computers
- o Status Display to User for all Server connections
- o Facility to reconnect in the event connection to a Server fails
- o Logging of information on Connections & Disconnections
- o Logging of Error Messages relating to OPC Communications
- o Redundancy feature with facility to define group of Servers used for Redundancy
- o In the event one Server fails, Data is acquired from the next Server in the Redundant Group
- o Switching between Servers based on Priority setting
- o One logical connection for each Non-Redundant Server & one per group of Redundant Server
- o Facility to browse for OPC items
- o Asynchronous Data Transfer (Data Transfer by Exception)

PMInletTemp	124.00	Dim
PMOutletTemp	490.00	Dim
PMOutletPressure	06.36	Dim
PMInletPressure	543.90	Dim
SeparatorSpeed	58.00	Dim
Distl Temp	52.00	Dim
Distl Temp Pressure	69.50	Dim
Cont#Pentem m1	30.00	Dim
Cont#Pentem m2	132.49	Dim
Cont#Pentem m3	214.75	Dim
Cont#Pentem m4	229.27	Dim
Cont#Pentem m5	68.00	Dim
Cont#Pentem m6	-78.00	Dim
Cont#Pentem m7	-1.00	Dim
Cont#Pentem m8	120.00	Dim
Cont#Pentem m9	-49.00	Dim
Cont#Pentem m10	67.00	Dim

Real-time information anywhere through Tag Lists

## Processing and Storage

- o Real-Time Data Pre-Processing with 1s (min) /5s /10s sampling
- o Min, Max, Sum, Avg functions for Pre-Processing
- o Selectable Archiving Times
- o for individual MIS Tags
- o Long Term Data Storage for years in Industry Standard MySQL database
- o Object Oriented Data Storage to facilitate additional Custom



Powerful Historical and Real-time trends

Flexible User Reports

## Reporting

- o Pre-defined time ranges -
- o Shift, Daily, Weekly, Monthly, Yearly
- o User definable time ranges -
- o Absolute, Relative
- o Easy-to-use interface for defining Reports (no programming required)
- o Reporting with Excel as Front End
- o User Need-based Formatting of Reports
- o Post Processing of Data using Excel Functions & Macros

## Options

- o Automatic Mail and Saving to Disk
- o Web Reporting
- o Event and Shutdown Reporting
- o Remote Clients

## General

- o Client-Server Architecture
- o Real Time Data as Trends and Tabular Forms
- o Historical Trends
- o Central Configuration & Data Management
- o Detailed Error and Diagnostics

User-friendly Interface

Recommended System Specifications : IBM Compatible PC, with PIII Processor and 256 Mb RAM; Windows NT4.0 / Windows2000.  
OPC Server for Connecting to Automation Systems.

### Technical Support:

eGeniotech Software Services  
33/34, Shetye Market Bldg,  
Parel, Mumbai - 400 012  
Tel.: +91 22 412 2931

### Internet:

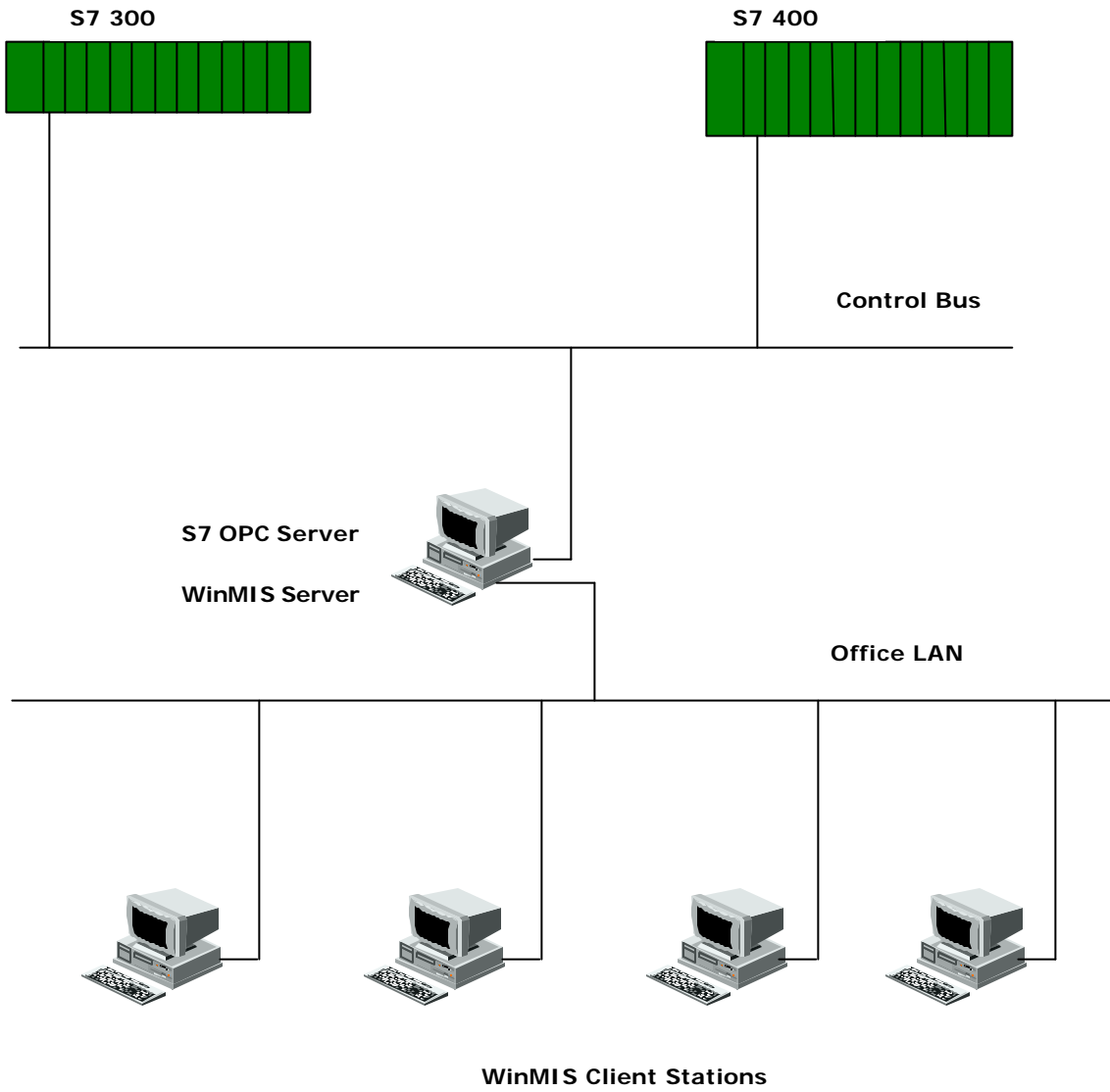
Website: [www.egeniotech.com](http://www.egeniotech.com)

E-Mail: [info@egeniotech.com](mailto:info@egeniotech.com)

### Sales Support:

Consulta Enterprises,  
1/4, Teachers Colony,  
Bandra (W), Mumbai - 400 051  
Tel.: +91 22 651 5118

# Typical WinMIS Configuration



# Sample Reports generated with WinMIS

## SATNA CEMENT WORKS

### Production Data Report - Clinker Production

From 15'Feb 2002 01:00 To 16'Feb 2002 00:00



v

	Actual Feed Tons	Factor in %	Clinker Produced Tons
SFM-1 Feed	5291.00	0.63	3333.33
SFM-2 Feed	0.00	0.63	0.00
<b>Total Feed</b>	<b>5291</b>		<b>3333.33</b>
Kiln Run Hours	24.00		24.00
Kiln TPH	220.4583333		138.89
Kiln Stop Hrs			0.00
Kiln No. of Stops			0
Kiln Power Consumption	4784.83	500	4784.83

**Plant Production Report**

From 1 Nov'02 to 30 Nov'02



**Raw Mill Weigh Feeder Accumulator**

	Wet Basis Counter (in Tons)	Moisture (%)	Dry Basis Counter
D1 Weigh Feeder	5095	0.6	5064
D2 Weigh Feeder	16	0.6	15
D3 Weigh Feeder	100	2.8	97
<b>Totals</b>	<b>5210</b>		<b>5177</b>

VRM Run Hours	19.84	Hours	Stop Hours	4.16	Hours
VRM TPH	263	(Wet Basis)	Stops	2	Times
VRM TPH	261	(Dry Basis)			

**Solid Flow Meter Accumulated Material Feed to Kiln**

	Actual Feed in Kiln (in Tons)	Clinker Factor (%)	Kiln Output (in Tons)
S.F.M.-1	5291	0.63	3333
S.F.M.-2	0	0.63	0
<b>Totals</b>	<b>5291</b>		<b>3333</b>

Kiln Run Hours	24.00	Hours	Stop Hours	0.00	Hours
Kiln Feed TPH	220	Ton/Hours	Stops	0	Times
Clinker TPH	139	Ton/Hours			

**Coal Consumption Accumulator**

	Actual Feed in Kiln (in Tons)	Mositure (%)	Coal Consumption (in Tons)
PC-Coal Firing	274	1.20	271
Kiln-Coal Firing	186.5833333	1.20	184
Stdby Coal Firing	0	1.20	0
<b>Total Coal used</b>	<b>461</b>		<b>455</b>
PC Bin Weight Diff.		1.20	0
KILN Bin Weight Diff.		1.20	0
<b>Total Coal Grind</b>	<b>461</b>		<b>455</b>

PC Firing Hours	23.88	HRS			
Kiln Firing Hours	24.93	HRS			
Stdby Firing Hours	0.00	HRS			
Coal used (TPH)	19.19	TON/HRS			
Coal Mill Run Hours	16.90	HRS	Stop Hours	7.10	HRS:MIN
Coal Mill (TPH)	27.25	TON/HRS	Stops	3	TIMES

## Satna Cement Works

### Power Consumption Report - Clinkerization Section

For 29 Nov'2002



	Units	Manual Factor	Total Units	Production	Run Hours	TPH	Stops	U/T
	A	B	(A + B)	P	R	(R/P)	S	(A+B)/P
Quarry + Ropeway Main Driver + Stacker + Reclaimer upto Hopper	14400	14400	14400	0				
Lat./Swt. Crusher	9432	9432	9432	0				
Raw Mill Motor	35085	10776	45861	312628	19.51	16028	2	0.11223
ESP Fan for Raw Mill	0	10656	-10656					
Raw Mill Auxillaries	13560		13560					
ESP Fan for KILN	0	0	0					
PH Fan	25787	0	25787		23.58			
Kiln Auxillaries	3574.533	0	3574.53333					
Coal Mill Motor	13265	10944	24209		16.54			
Coal Mill Auxillaries	-1880.95	0	-1881					
<b>Totals</b>			<b>124286.65</b>					



**Equipment Run Hours Report**

From 15/2/2002 0:00 to 16/2/2002 0:00

Sr. No.	Equipment	Run Hours	Stop Hours	No.of Stops
1	VRM	19.51	4.10	2
2	ESP FAN	20.14	3.46	2
3	PH FAN	24.00	0.02	0
4	KILN	24.00	0.02	0
5	COAL MILL	16.54	7.06	3
6	COAL MILL CIRCULATING FAN	17.11	6.49	3
7	COOLER VENT FAN	23.57	0.03	3
8	PH5 EXIT CO%			3
9	ESP I/L CO%			0
10	CM ESP	17.21	6.40	3
11	KILN ESP	0.00	24.00	3
12	COOLER ESP	0.00	24.00	2



**Vertical Roller Mill Log Sheet**

For 11 Nov'2002

Time	VRM FEED								VRM MILL					VRM FAN					VRM MILL		
	Lime Stone		Shale		Iron Ore		Feed Belt		Mill Motor		Mill			Fan Motor			Fan Vibration		Reclaim er Belt	Run Hours	
	Feed Rate	WF Speed	Feed Rate	WF Speed	Feed Rate	WF Speed	Speed	Current	Power	Current	Grinding Pressure	Mill Vibration	Layer Thickness	Power	Current	Speed	DE	NDE			
	TPH	RPM	TPH	RPM	TPH	RPM	Amps	KW	Amps	Bar	mm/Sec	mm	KW	Amps	RPM	mm/Sec	mm/Sec		hh:mm		
00:00 Hrs.	226.43	0.00	12.06	0.00	0.22	0.00	1465.20	26.40	1111.92	91.83	141.44	0.60	30.28	1146.26	104.87	954.87	0.14	1.21	477.94	0:48	
01:00 Hrs.	234.07	0.00	10.40	0.00	0.22	0.00	1464.84	27.40	1245.10	108.72	145.35	0.60	34.37	1195.26	109.16	954.77	0.14	1.25	9.52	1:0	
02:00 Hrs.	250.00	0.00	11.95	0.00	0.22	0.00	1466.67	28.65	1056.64	84.58	158.44	0.60	25.46	1281.12	115.75	954.87	0.14	1.23	618.25	1:0	
03:00 Hrs.	1.83	0.00	0.15	0.00	0.22	0.00	1.83	0.07	2.93	0.04	92.80	0.06	110.26	0.84	0.18	600.49	0.14	0.11	9.52	0:53	
04:00 Hrs.	1.71	0.00	0.15	0.00	0.22	0.00	2.20	0.07	2.93	0.04	91.62	0.06	165.38	241.65	21.79	600.49	0.14	0.43	9.84	0:23	
05:00 Hrs.	208.06	0.00	4.29	0.00	0.23	0.00	1464.84	23.86	1027.74	88.72	137.92	0.75	30.10	1176.42	109.16	954.87	0.13	0.84	517.14	0:26	
06:00 Hrs.	243.41	0.00	5.09	0.00	0.22	0.00	1464.47	27.14	1349.38	111.65	152.28	0.45	35.35	1117.37	102.75	954.87	0.13	1.98	0.00	1:0	
07:00 Hrs.	244.51	0.00	5.60	0.00	0.23	0.00	1464.84	27.58	1252.64	97.88	152.48	0.45	34.74	1145.01	104.43	954.87	0.13	1.28	0.00	1:0	
08:00 Hrs.	244.20	0.00	0.17	0.00	11.09	0.00	1464.47	27.14	1360.69	112.16	154.53	0.35	42.00	1076.32	99.12	954.87	0.13	0.55	0.00	1:0	
<b>Shift Average</b>	<b>178.47</b>	<b>0.00</b>	<b>4.73</b>	<b>0.00</b>	<b>1.58</b>	<b>0.00</b>	<b>1099.27</b>	<b>20.24</b>	<b>912.26</b>	<b>75.47</b>	<b>135.68</b>	<b>0.42</b>	<b>0.50</b>	<b>904.25</b>	<b>82.79</b>	<b>866.26</b>	<b>0.13</b>	<b>0.96</b>		<b>0.0</b>	
09:00 Hrs.	1.83	0.00	0.13	0.00	0.21	0.00	1.83	0.07	2.93	0.04	93.97	0.06	112.21	274.74	27.62	718.68	0.14	0.44	0.00	0:48	
10:00 Hrs.	245.18	0.00	0.15	0.00	7.97	0.00	1464.47	27.40	1348.13	110.77	144.66	0.30	44.63	1065.02	97.44	954.87	0.15	0.49	0.00	0:56	
11:00 Hrs.	1.83	0.00	0.13	0.00	0.21	0.00	2.20	0.07	2.93	0.00	71.40	0.06	23.57	0.84	0.07	600.49	0.15	0.06	0.00	0:14	
12:00 Hrs.	1.89	0.00	0.13	0.00	0.15	0.00	1.83	0.07	2.93	0.07	70.13	0.06	22.71	2.09	0.07	600.49	0.15	0.06	9.21	0:0	
13:00 Hrs.	1.83	0.00	0.13	0.00	0.16	0.00	2.20	0.18	2.93	0.04	69.45	0.06	23.57	2.09	0.18	600.49	0.16	0.06	9.21	0:0	
14:00 Hrs.	200.67	0.00	0.13	0.00	10.04	0.00	1464.47	26.88	1118.62	97.73	125.62	0.36	41.39	1087.21	100.26	954.87	0.17	0.47	9.21	0:43	
15:00 Hrs.	97.37	0.00	0.13	0.00	4.59	0.00	1463.37	17.07	215.26	12.89	92.50	0.35	109.52	718.25	65.57	954.87	0.17	0.59	650.00	0:51	
16:00 Hrs.	190.42	0.00	9.91	0.00	0.15	0.00	1465.20	25.37	1266.46	101.94	139.68	0.30	36.14	981.26	88.42	954.87	0.18	0.56	8.73	0:58	
<b>Shift Average</b>	<b>92.63</b>	<b>0.00</b>	<b>1.36</b>	<b>0.00</b>	<b>2.93</b>	<b>0.00</b>	<b>733.20</b>	<b>12.14</b>	<b>495.03</b>	<b>40.43</b>	<b>100.93</b>	<b>0.19</b>	<b>0.34</b>	<b>516.44</b>	<b>47.45</b>	<b>792.45</b>	<b>0.16</b>	<b>0.34</b>		<b>0.0</b>	
17:00 Hrs.	193.65	0.00	20.20	0.00	0.16	0.00	1465.57	26.88	1367.81	109.89	144.18	0.30	34.80	1063.76	97.22	954.87	0.24	0.53	650.00	1:0	
18:00 Hrs.	201.16	0.00	13.30	0.00	0.16	0.00	1465.20	27.14	1255.99	98.90	145.93	0.45	32.72	1141.24	103.48	954.87	0.24	1.16	650.00	1:0	
19:00 Hrs.	194.38	0.00	14.81	0.00	0.15	0.00	1464.84	26.66	1124.91	88.32	144.86	0.41	32.17	1119.46	104.14	954.87	0.24	0.56	650.00	1:0	
20:00 Hrs.	196.46	0.00	1.62	0.00	0.16	0.00	1464.84	26.40	1424.35	117.36	148.28	0.36	39.56	1091.82	103.70	954.87	0.23	0.52	650.00	1:0	
21:00 Hrs.	203.60	0.00	8.63	0.00	0.21	0.00	1465.20	27.40	1401.74	109.38	152.97	0.30	33.64	1096.01	102.49	954.87	0.22	0.53	9.21	1:0	
22:00 Hrs.	205.37	0.00	0.15	0.00	5.02	0.00	1465.57	26.70	1175.58	92.42	147.11	0.35	31.56	1084.70	100.95	954.87	0.17	0.53	9.52	0:42	
23:00 Hrs.	200.00	0.00	5.01	0.00	0.16	0.00	1464.84	26.66	1448.64	104.54	157.56	0.36	44.08	1121.97	101.83	954.87	0.21	0.54	650.00	1:0	
00:00 Hrs.	207.51	0.00	6.83	0.00	0.17	0.00	1465.20	27.40	1097.26	96.41	150.92	0.55	29.67	1290.75	113.70	954.87	0.21	1.01	9.37	1:0	
<b>Shift Average</b>	<b>200.27</b>	<b>0.00</b>	<b>8.82</b>	<b>0.00</b>	<b>0.77</b>	<b>0.00</b>	<b>1465.16</b>	<b>26.90</b>	<b>1287.04</b>	<b>102.15</b>	<b>148.97</b>	<b>0.39</b>	<b>0.58</b>	<b>1126.21</b>	<b>103.44</b>	<b>954.87</b>	<b>0.22</b>	<b>0.67</b>			
<b>Day Min Value</b>	<b>1.71</b>	<b>0.00</b>	<b>0.13</b>	<b>0.00</b>	<b>0.15</b>	<b>0.00</b>	<b>1.83</b>	<b>0.07</b>	<b>2.93</b>	<b>0.00</b>	<b>69.45</b>	<b>0.06</b>	<b>22.71</b>	<b>0.84</b>	<b>0.07</b>	<b>600.49</b>	<b>0.13</b>	<b>0.06</b>	<b>0.00</b>		
<b>Day Max Value</b>	<b>250.00</b>	<b>0.00</b>	<b>20.20</b>	<b>0.00</b>	<b>11.09</b>	<b>0.00</b>	<b>1466.67</b>	<b>28.65</b>	<b>1448.64</b>	<b>117.36</b>	<b>158.44</b>	<b>0.75</b>	<b>165.38</b>	<b>1290.75</b>	<b>115.75</b>	<b>954.87</b>	<b>0.24</b>	<b>1.98</b>	<b>650.00</b>		
<b>Day Avg Value</b>	<b>199.49</b>	<b>0.00</b>	<b>6.31</b>	<b>0.00</b>	<b>1.76</b>	<b>0.00</b>	<b>1099.21</b>	<b>19.76</b>	<b>1140.29</b>	<b>72.69</b>	<b>128.53</b>	<b>0.33</b>	<b>48.73</b>	<b>848.97</b>	<b>77.90</b>	<b>871.20</b>	<b>0.17</b>	<b>0.66</b>	<b>213.70</b>	<b>0:47</b>	
<b>Ideal</b>	<b>120.00</b>																				
<b>Deviation</b>	<b>-79.49</b>	<b>0.00</b>	<b>-6.31</b>	<b>0.00</b>	<b>-1.76</b>	<b>0.00</b>	<b>-1099.21</b>	<b>-19.76</b>	<b>-1140.29</b>	<b>-72.69</b>	<b>-128.53</b>	<b>-0.33</b>	<b>-48.733211</b>	<b>-848.97</b>	<b>-77.90</b>	<b>-871.20</b>	<b>-0.17</b>	<b>-0.66</b>	<b>-213.70</b>		

## Operation Report for AAFS of Plant I

For 3 Sep'2002



Sr. No.	Description		A.A.F.S Line1	A.A.F.S Line 2	A.A.F.S Line 3
1	A.A.F.S Running Hours		24.00	24.00	0.00
2	One or more quarters of line main airslide off (minutes)	A	336.00	331.00	170.00
		B	336.00	336.00	336.00
		C	336.00	188.00	318.00
		D	84.00	178.00	336.00
3	Main A/S Fan (ON/OFF)	#1	OFF	OFF	OFF
4	(At the end of day)	#2	OFF	OFF	OFF
5	Pot A/S Fan(ON/OFF)	#1	OFF	OFF	OFF
6	(At the end of day)	#2	OFF	OFF	OFF
7	Main A/S Fan Pressure (mmwg)		0.00	0.00	0.00
8	Pot A/S Fan Pressure (mmwg)		0.00	0.00	0.00
9	Manual / Auto (At the end of day)			MANUAL	MANUAL
10	Silo Level Position (At the end of day)	A	EMPTY	EMPTY	EMPTY
		B	EMPTY	EMPTY	EMPTY
11		A1	22.49	15.59	13.37
12	Main A/S Pressure at	A83/88	10.61	30.10	9.25
13	end pot no.(mbar)	B1	23.24	31.34	12.93
14		B83/88	20.58	18.82	9.65

**Report for Primary Alumina Handling of Plant I  
For 2 Sep'02**

Sr.No.	Description	Primary A/s Fan Line1 / Belt#1	Primary A/s Fan Line2 / Belt#2	Primary A/s Fan Line3 / Belt#3
1	Running Hours	0.00	0.00	0.00
2	Alumina Fill Rate			
	Duration (Min)	0.00	0.00	0.00
	Total Quantity	0.00	0.00	0.00
3	Weightometer on Master Conveyor	Avg	0.00	0.00
4		Duration > 60000 kg/hr	0.00	0.00
5		Total Weight	0.00	0.00
6	Vibrating Screen (ON/OFF) (At the end of Month)	OFF	OFF	OFF

# References of our esteemed clients using WinMIS

1. **SATNA CEMENT WORKS, SATNA, MP**

*MIS for Main Plant*

Interface System : Siemens S5 155U PLC with WinCC OS, Sinech1

2. **BIRLA VIKAS CEMENT, SATNA, MP**

*MIS for Main Plant*

Interface System : Siemens S5 155U PLC with WinCC OS, Sinech1

3. **DECCAN CEMENT LTD., BHAVANIPURAM, AP**

*MIS for Clinkerisation Plant*

Interface System : Siemens S7 416-2DP PLC with WinCC OS, Sinech1

4. **DECCAN CEMENT LTD., BHAVANIPURAM, AP**

*MIS for Slag Cement Plant*

Interface System : Siemens S7 416-3DP PLC with WinCC OS, Sinech1

5. **MYHOME CEMENT, NALGONDA DISTT., AP**

*MIS for Complete Cement Plant*

Interface System : Siemens S7 416-2DP PLC with WinCC OS, Sinech1, S7 OPC Server

6. **HINDALCO, RENUKOOT, UP**

*MIS for Aluminum Flow Transfer Unit*

Interface System : Siemens S7 PLC, WinCC and Sinec H1

7. **NMDC, KIRANDUL, CG**

*MIS for Tertiary Crusher Plant & Iron Ore Transfer*

Interface System : Siemens S7 300, WinCC, Profibus

8. **SCCL, RAMAGUNDAM, AP**

*MIS for Coal Transfer Plant*

Interface System : Siemens S5 155U, WinCC, Profibus

9. **MOTHER DAIRY (IDMC), GANDHINAGAR, GUJARAT**

*Pouch Packing System*

Interface System : Siemens S5 155U, WinCC, Sinech1